

- Specifications subject to change without notice - Copyright ELAFLEX HIBY

5 Section	Construction Details · Materials Weight · Application Specification	Hose Inlet Thread Type + Size	Part Number Type
--------------	---	----------------------------------	------------------------



Nozzle with fill line connection and integrated swivel function.

For use with liquefied natural gas 'LNG' (or liquid nitrogen for calibration purposes) with a low media temperature down to -196° C. Flow rate up to 190 l/min (50 GPM). Maximum working pressure 34 bar.

When uncoupling, only a minimal discharge volume of gas - direction of discharge pointing away from the user. Soft stop function ensures trapped LNG to discharge slowly and completely before the coupling disconnects. Gas flow only when correctly coupled.

Installation on Fill Line of LNG dispensers.

Materials: Parts in contact with LNG of stainless steel and special brass alloy, seals of PTFE. Others: aluminium, bronze alloy, PP, PA.

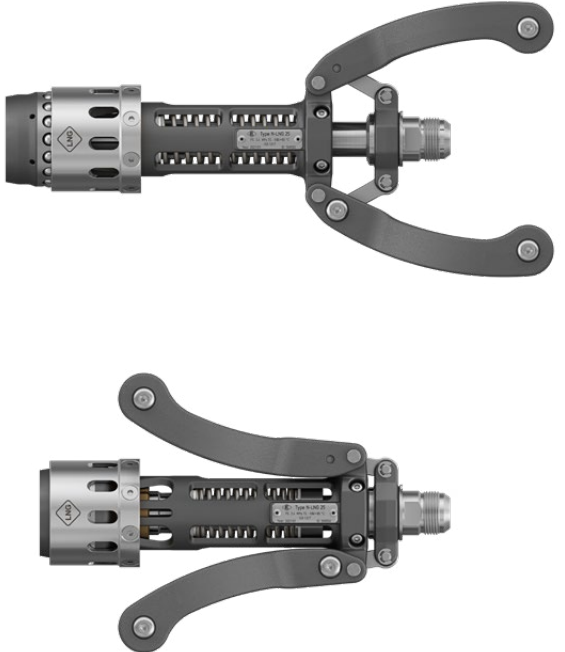
Weight ≈ 3,8 kg

To EN ISO 12617

Connection to Fill Line (FL)	1 5/16" -12 J514 37° (JIC 37°) AG / male	N-LNG
With optional Rain Cover, two-pieces with fixation		... RC
Splashguard, green. (Not in combination with opt. Rain Cover.) Note for Nozzle Boot: OD: ≈ 110 mm		... EK 514

LNG nozzle for refuelling of heavy vehicles (trucks) with refuelling interface to EN ISO 12617.  
Ambient temperature range -40°C to +85°C (-40°F to 185°F).

**N-LNG**



Vent Coupling with bayonet connection.

For use with liquefied natural gas (or liquid nitrogen) with a low media temperature down to -196°C. For venting of LNG fuel tanks of heavy vehicles with an LNG engine. Flow rate up to 38 l/min (10 GPM). Maximum working pressure 34 bar.

Installation on Vent Line of LNG dispensers.

Materials: Parts in contact with LNG of stainless steel, seals of PTFE and NBR-LT

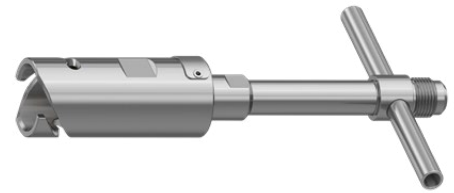
Weight ≈ 0,9 kg

To EN ISO 16924

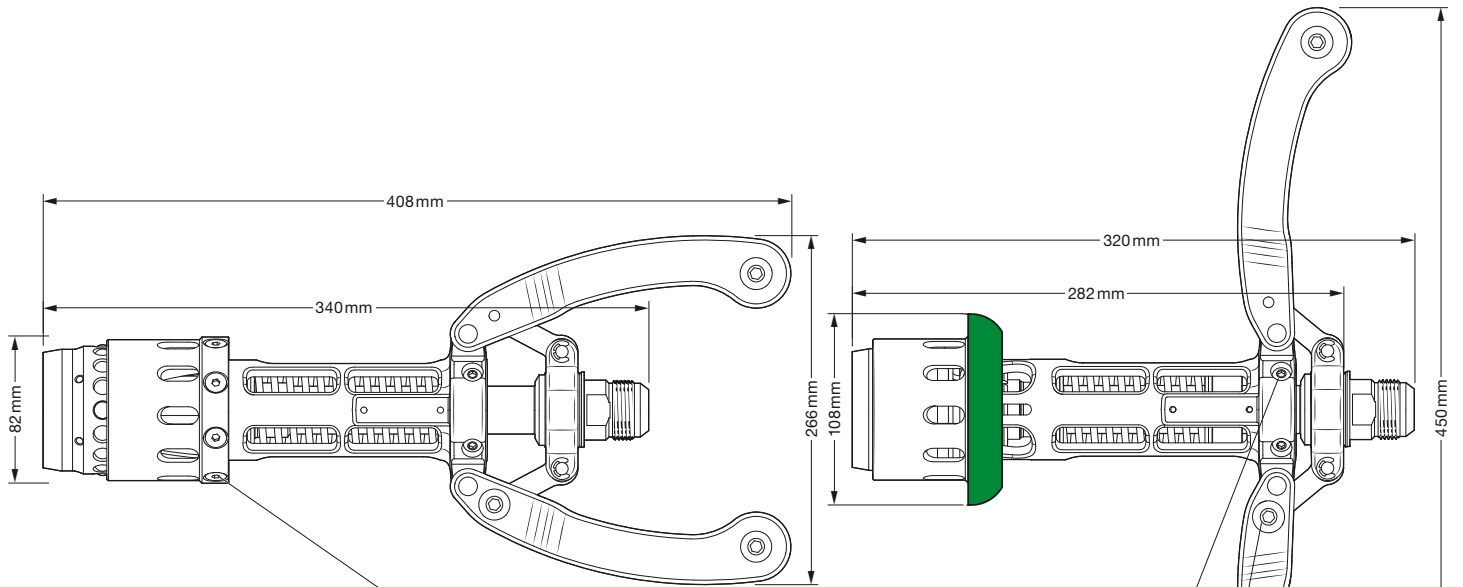
— Connection to Vent Line (VL)	7/8" -14 J512 45° AG / male	VC-LNG
-----------------------------------	--------------------------------	--------

Vent Coupling for overpressure regulation (> 10 bar) in the LNG tank of heavy vehicles, especially trucks, to enable refuelling.  
Ambient temperature range -40°C to +85°C (-40°F to 185°F).

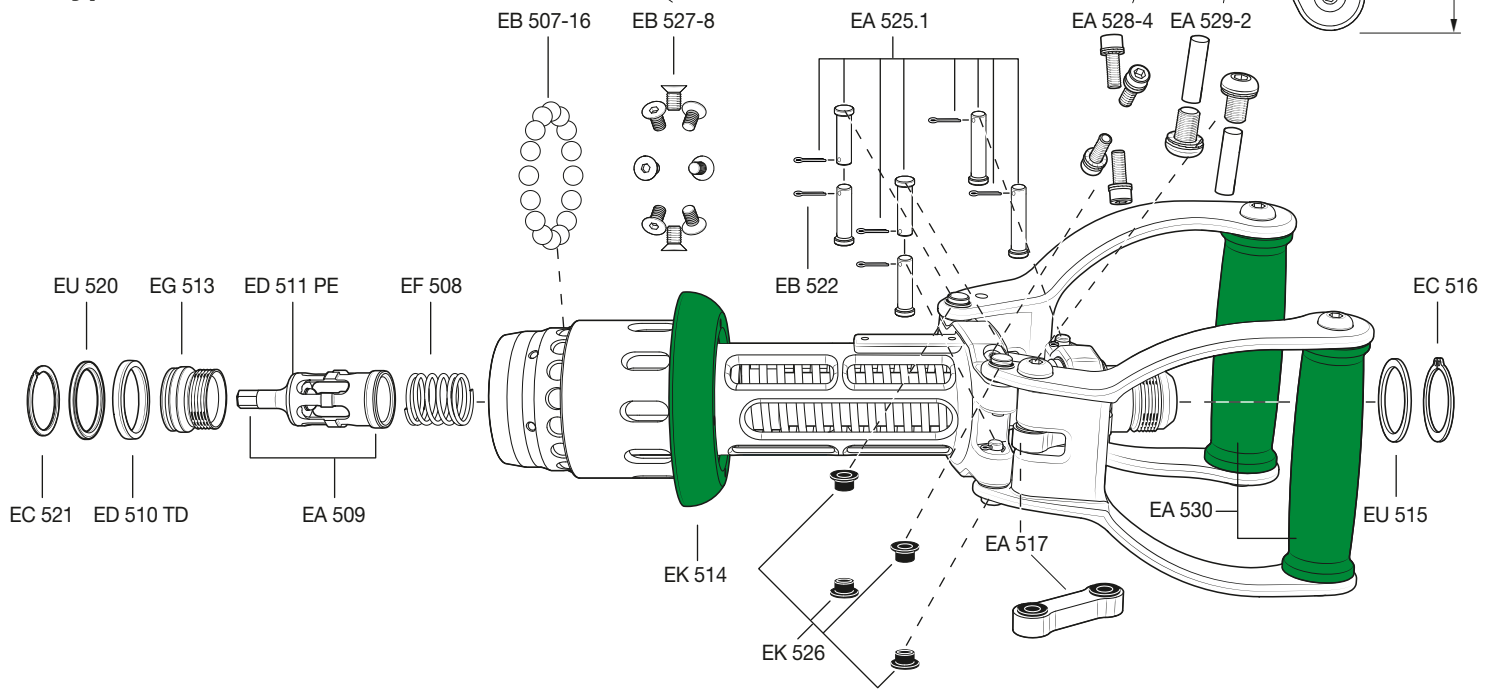
**VC-LNG**



• Spare Parts N-LNG and VC-LNG



**Type N-LNG**



**Type VC-LNG**

