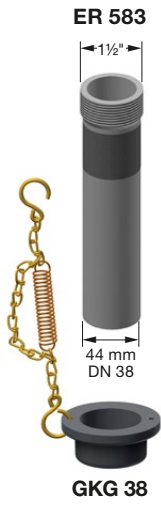


Specifications subject to change without notice · Copyright ELAFLEX HIBY

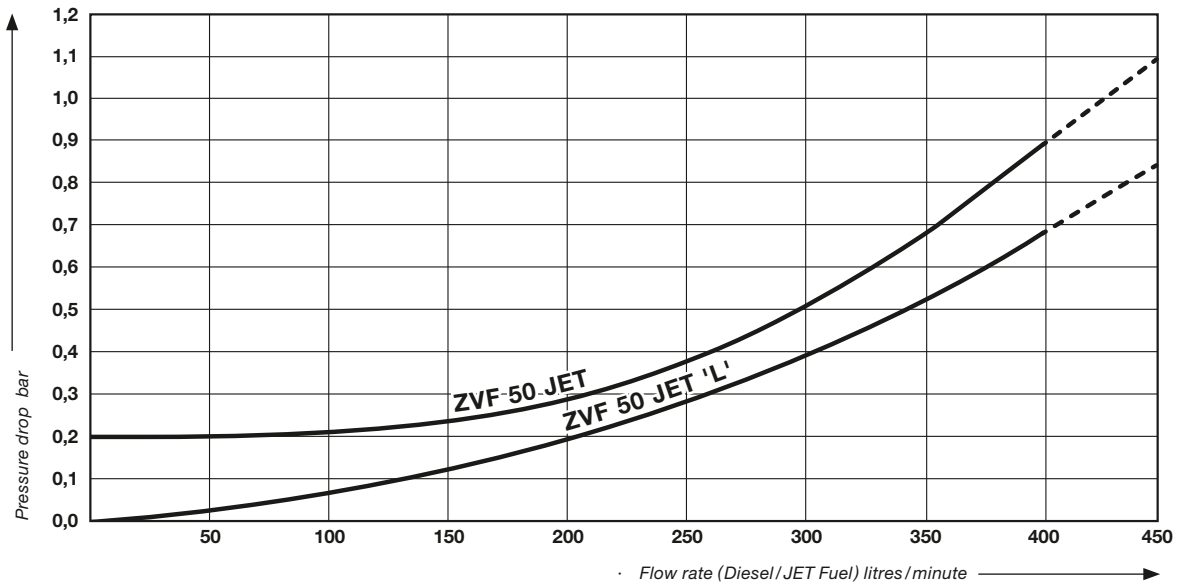


5 Section	Weight Approx. ≈ kg	Construction Details Materials Specification	Hose Inlet Thread Type + Size G	Part Number Type
	2,6	<p>Wet hose type with check valve. Body of aluminium, inner parts stainless steel, PEEK and acetal resin. Lever, LeverAssist® (3-speed lever aid) and guard of reinforced polyamide, easy rotating swivel of coated aluminium, protectors of TPU red or black, seals polyurethane and NBR. Completely free of non-ferrous metals. With conical 100 mesh strainer of stainless steel.</p> <p><b>Screw-In-Connection (SIC) for spouts.</b> Spouts to be ordered separately. In alignment with the requirements of the JIG document.</p>	R 1½" AG 1½" BSP male	ZVF 50 JET.1 SIC ZVF 50 AVGAS.1 SIC
	2,6		R 2" AG 2" BSP male	ZVF 50 JET.2 SIC ZVF 50 AVGAS.2 SIC
	2,6		R 1½" IG 1½" BSP female	ZVF 50 JET.3 SIC ZVF 50 AVGAS.3 SIC
	2,5		R 2" IG 2" BSP female	ZVF 50 JET.4 SIC ZVF 50 AVGAS.4 SIC
	2,6		1½" NPT IG 1½" NPT female	ZVF 50 JET.5 SIC ZVF 50 AVGAS.5 SIC
	2,5		2" NPT IG 2" NPT female	ZVF 50 JET.7 SIC ZVF 50 AVGAS.7 SIC
<b>· Additional Type Numbers</b>				
	-	Without check valve, suitable for defuelling or gravity flow (dry hose delivery).	Option	... L
	-	With integrated sight glass in nozzle body.	Option	... SG
	0,26	Aluminium spout, Screw-In-Connection (SIC)	DN 19 OD 25 f. 100 Ltr./Min.	ER 494
	0,20		DN 32 OD 38 f. 250 Ltr./Min.	ER 495
	0,27		DN 38 OD 44 f. 400 Ltr./Min.	ER 583
	0,28		JET A1 nach/to SAE AS 1852 f. 400 Ltr./Min.	ER 587 JET
	0,70		length 600 mm	SRG 32-600 ZVF 50
	1,00	Defuelling spout (conductive NBR rubber spout) with flat strainer 25 mesh (EK 367) and protector. <b>Direct attachment to 2" female thread of nozzle body.</b> Only for ZVF 50 ... 'L'.	length 1200 mm	SRG 32-1200 ZVF 50
	0,08	Dust cap assembly. Cap NBR, chain and spring brass and bronze.	for ER 494	GKG 19 ER
	0,10		for ER 495	GKG 32
	0,10		for ER 583	GKG 38
	0,10		for ER 587 JET	GKG 38-J
	0,15	Ground cable assembly with solid heavy brass clamp and bolt. Wire non-corrosive with plastic coating.	length 1200 mm	EKG 1200
	0,20		length 2000 mm	EKG 2000

Manual aviation fuelling nozzle for overwing service. For AVGAS and JET fuels. Flow rate up to 400 ltr. / min. (85 IGM – higher flow rates are possible). Size DN 50. Max. Working Pressure 10 bar (140 psi). Temperature range -40°C up to +55°C.  
**With Screw-In-Connection for spouts.**



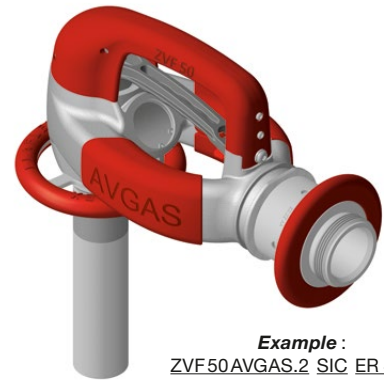
**Flow Chart**  
ZVF 50



**Part Number Breakdown**



Option : / Sight Glass



Example :  
ZVF50AVGAS.2 SIC ER 495

Example:  
ZVF50JET.4 PTL SG ER587JETPTL

Body	Hose Inlet	Spout Connection	L-Type	Sight Glass	Spout	Dust Cap Assembly	Ground Cable Assembly
ZVF 50 JET (black)	R 1½" AG 1½" BSP male = .1	Screw-In- Connection = SIC	Standard = [-]	None = [-]	DN 19 /for SIC = ER 494	None = [-]	None = [-]
ZVF 50 AVGAS (red)	R 2" AG 2" BSP male = .2			With = SG	DN 19 /for PTL = ER 494 PTL	GKG 19 ER = GKG 19 ER	EKG 1200 = EKG 1200
ZVF 50 UL (green)	R 1½" IG 1½" BSP female = .3	Push-Twist- Lock = PTL	L-Type also suitable for defuelling = L		DN 32 /for SIC = ER 495	GKG 32 = GKG 32	EKG 2000 = EKG 2000
	R 2" IG 2" BSP female = .4				DN 32 /for PTL = ER 495 PTL	GKG 38 = GKG 38	
	1½" NPT IG 1½" NPT female = .5				DN 38 /for SIC = ER 583	GKG 38-J = GKG 38-J	
	2" NPT IG 2" NPT female = .7				DN 38 /for PTL = ER 583 PTL		
	1¼" NPT IG 1¼" NPT female = .10				JET, OD 68x28 /for SIC = ER 587 JET		
	JET, OD 68x28 /for PTL = ER 587 JET PTL						
	Flex spout assembly L 600 = SRG 600 ZVF 50						
	Flex spout assembly L 1200 = SRG 1200 ZVF 50						
	without spout = [-]						

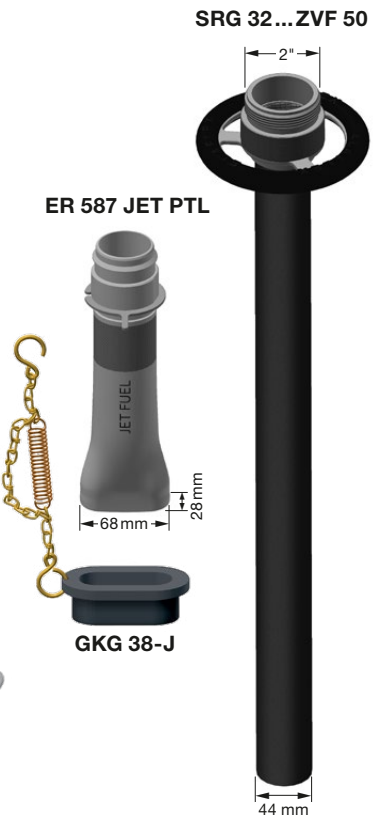
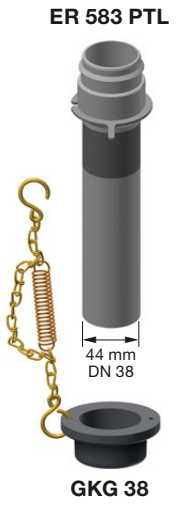
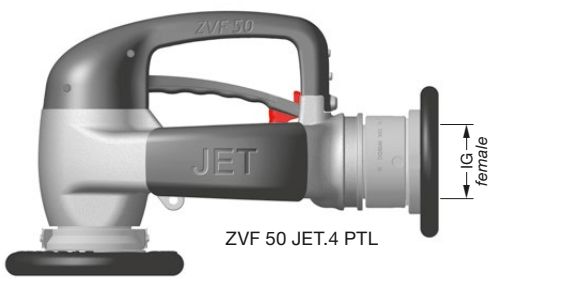
[-]  
left blank in order number

Specifications subject to change without notice · Copyright ELAFLEX HIBY



5 Section	Weight Approx. ≈ kg	Construction Details Materials Specification	Hose Inlet Thread Type + Size G	Part Number Type
	2,6	Wet hose type with check valve. Body of aluminium, inner parts stainless steel, PEEK and acetal resin. Lever, LeverAssist® (3-speed lever aid) and guard of reinforced polyamide, easy rotating swivel of coated aluminium, protectors of TPU red or black, seals polyurethane and NBR. Completely free of non-ferrous metals. With conical 100 mesh strainer of stainless steel. <b>Push-Twist-Lock-Connection (PTL) for spouts.</b> Spouts to be ordered separately. In alignment with the requirements of the JIG document.	R 1½" AG 1½" BSP male	ZVF 50 JET.1 PTL ZVF 50 AVGAS.1 PTL
	2,6		R 2" AG 2" BSP male	ZVF 50 JET.2 PTL ZVF 50 AVGAS.2 PTL
	2,6		R 1½" IG 1½" BSP female	ZVF 50 JET.3 PTL ZVF 50 AVGAS.3 PTL
	2,5		R 2" IG 2" BSP female	ZVF 50 JET.4 PTL ZVF 50 AVGAS.4 PTL
	2,6		1½" NPT IG 1½" NPT female	ZVF 50 JET.5 PTL ZVF 50 AVGAS.5 PTL
	2,5		2" NPT IG 2" NPT female	ZVF 50 JET.7 PTL ZVF 50 AVGAS.7 PTL
<b>· Additional Type Numbers</b>				
	–	Without check valve, suitable for defuelling or gravity flow (dry hose delivery).	Option	... L
	–	With integrated sight glass in nozzle body.	Option	... SG
	0,45	Aluminium spout, Push-Twist-Lock Connection (PTL)	DN 19 OD 25 f. 100 Ltr./Min.	ER 494 PTL
	0,39		DN 32 OD 38 f. 250 Ltr./Min.	ER 495 PTL
	0,46		DN 38 OD 44 f. 400 Ltr./Min.	ER 583 PTL
	0,47		JET A1 nach/to SAE AS 1852 f. 400 Ltr./Min.	ER 587 JET PTL
	0,70	Länge length 600 mm		SRG 32-600 ZVF 50
	1,00	Defuelling spout (conductive NBR rubber spout) with flat strainer 25 mesh (EK 367) and protector. <b>Direct attachment to 2" female thread of nozzle body.</b> Only for ZVF 50 ... 'L'.	Länge length 1200 mm	SRG 32-1200 ZVF 50
	0,08	Dust cap assembly. Cap NBR, chain and spring brass and bronze.	für for ER 494 PTL	GKG 19 ER
	0,10		für for ER 495 PTL	GKG 32
	0,10		für for ER 583 PTL	GKG 38
	0,10		für for ER 587 JET PTL	GKG 38-J
	0,15	Länge length 1200 mm		EKG 1200
	0,20	Ground cable assembly with solid heavy brass clamp and bolt. Wire non-corrosive with plastic coating.	Länge length 2000 mm	EKG 2000

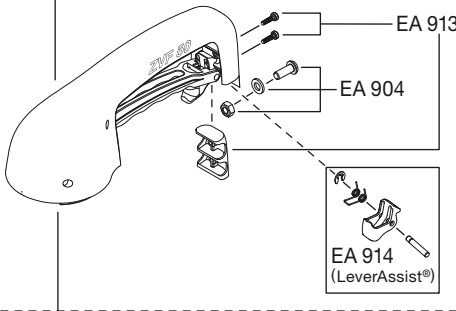
Manual aviation fuelling nozzle for overwing service. For AVGAS and JET fuels. Flow rate up to 400 ltr. / min. (85 IGM – higher flow rates are possible). Size DN 50. Max. Working Pressure 10 bar (140 psi). Temperature range -40°C up to +55°C.  
**With Push-Twist-Lock spout connection.**



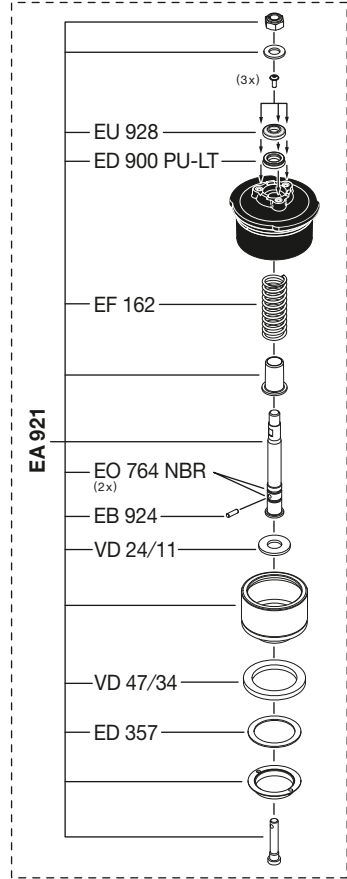
• Spare Parts ZVF 50

- 1) Body not available as spare part
- 2) Option to EG 944 :  
sight glass with washer
- 3) 'L'-Type (dry hose version)  
without EK 413 and EF 411

**EA 909**  
 · black (f. JET)  
 · red (f. AVGAS)  
 · green (f. UL)



• Swivels	
DG 50.1 AI	(R 1½" AG) (1½" BSP male)
DG 50.2 AI	(R 2" AG) (2" BSP male)
DG 50.3 AI	(R 1½" IG) (1½" BSP female)
DG 50.4 AI	(R 2" IG) (2" BSP female)
DG 50.5 AI	(1½" NPT IG) (1½" NPT female)
DG 50.7 AI	(2" NPT IG) (2" NPT female)
DG 50.10 AI	(1¼" NPT IG) (1¼" NPT female)



EC 907

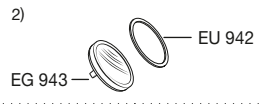
EU 908

EO 901 NBR

R 2" IG  
2" BSP fem.

VD 60/49

ES 418.1



EG 944  
EO 348

EC 941

EK 413<sup>3)</sup>  
EF 411<sup>3)</sup>

VD 60/49

EK 903  
 · black (f. JET)  
 · red (f. AVGAS)

EK 946  
 · black (f. JET)  
 · red (f. AVGAS)  
 · green (f. UL)

Set left + right

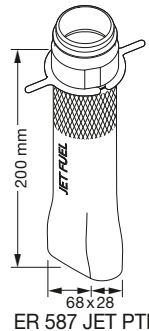
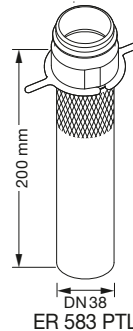
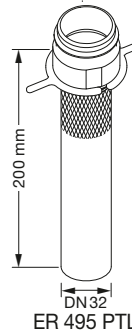
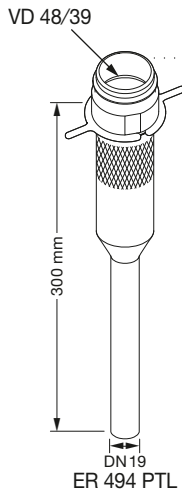
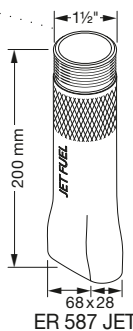
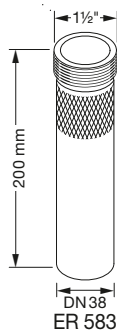
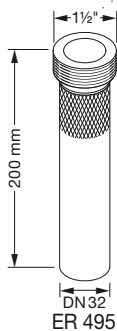
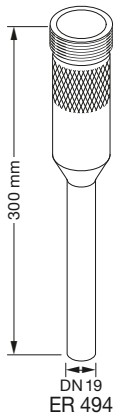
JET

AVGAS

EA 951  
 · black  
 (f. JET)  
 · red  
 (f. AVGAS)

EK 953  
 · black  
 (f. JET)  
 · red  
 (f. AVGAS)

VD 48/39



EA 951 PTL  
 · black  
 (f. JET)  
 · red  
 (f. AVGAS)

EK 953  
 · black  
 (f. JET)  
 · red  
 (f. AVGAS)

EO 955 Vi

**Screw-In-Connection 'SIC'**

**Push-Twist-Lock 'PTL'**